



## Security, Network Quality, & Resiliency



### We built our network to ensure that service providers have peace of mind when it comes to things like security, network quality, resiliency, and redundancy.

Alianza customers serve some of the most demanding and quality-conscious markets around, so we've created a tier 1, **carrier-grade network architecture that allows you to focus on your business.**

True zero-downtime architecture with software hosted in our two data centers (Sacramento, CA and Ashburn, VA) with an active-active, georedundant, and real-time data replication between sites. It's protected by leading SBCs on the access and interconnect edges of the platform which are constantly tested and benchmarked for threat detection and network penetration. We support for various means of connecting including, tunneling over public internet, GRE, Megaport, and ethernet private line options.



#### Security

Constant security benchmarking, network penetration testing, threat audits, and more keeps you secure.

- Full SOC 2 Compliance
- Stringent access controls
- Multi-factor authentication
- Network Firewalls and SBCs
- Fully walled customer partitions
- Public or private cloud connectivity



#### Network Quality

Our network is built using best of breed technology chosen for scalability, easy consumption, and exceptional quality.

- Elastic cloud architecture
- All platform components are 100% virtualized (except SBCs)
- No individual servers or clusters – all components are redundant clusters
- Proactive network monitoring & optimization



#### Resiliency

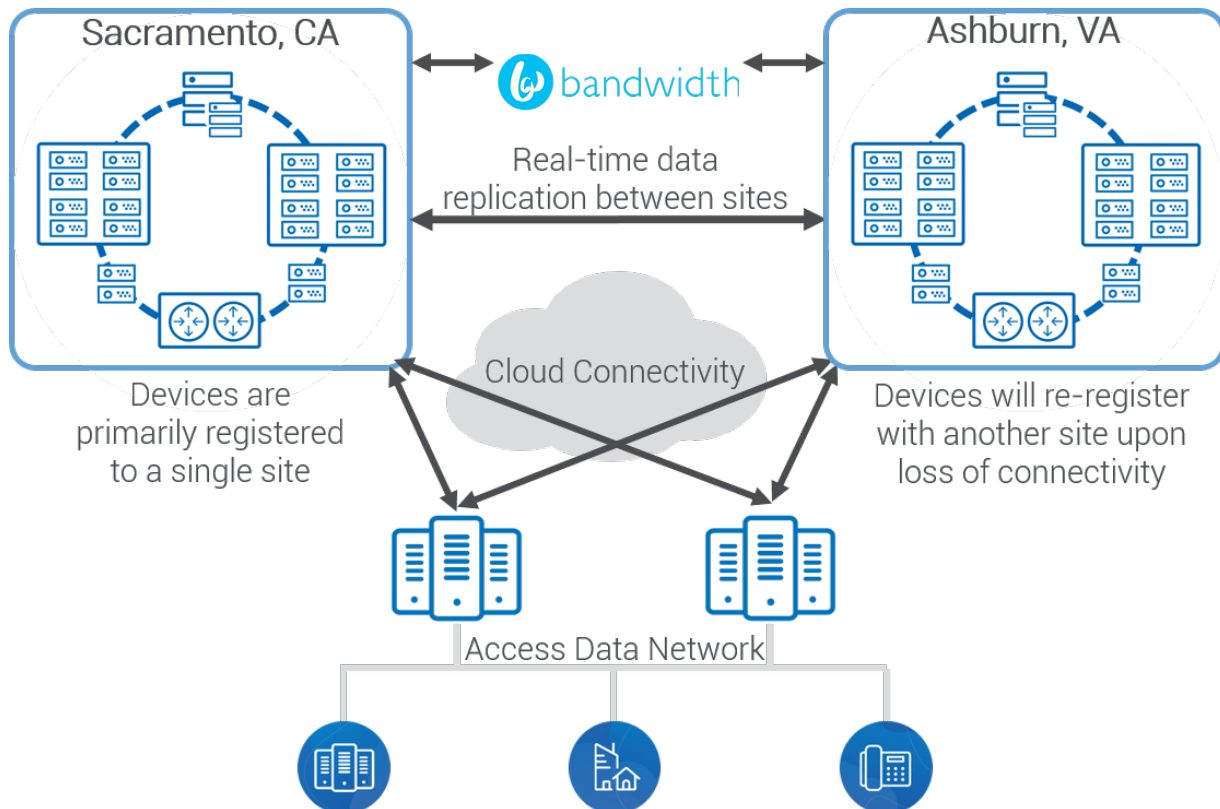
Always-on, active-active georedundant and infinitely scalable. We adapt and respond to change with ease.

- True zero-downtime architecture
- Intra-site and inter-site redundancy
- Automated failover to georedundant, always-on, secondary location
- Real-time data replication between data centers in Sacramento and Ashburn

# Network Architecture & Redundancy

**Architected for n+1 scalability and indefinite horizontal scalability with added commodity hardware and diverse data centers. All components scale horizontally. No vertical scaling components to circumvent bottle necks.**

Alianza uses national CLECs for PSTN interconnections, porting, and 911, including Bandwidth and CenturyLink. LNP, E911, CALEA, TRS, and other x111 services are all supported. In addition, our 24x7x365 staffed NOC and monitoring of the platform and service provider VoIP services ensure we can deliver carrier grade SLAs and uptime guarantees. Designed with proactive monitoring, alerts, fraud detection in place across all trunk groups, and capacity requirements management **ensures each connection is always kept below 50% capacity in case a redundant connection fails.**



## Get Started! →

To learn more about how a cloud communications platform can add a powerful, profitable, and sought after solution to your network, contact our sales team today.